

COMPACT CTP SYSTEM OPTIMIZED FOR  
VERICO ZAHARA® WATERLESS PLATES



2540 & 5080 Models

---

# HD Pro-W

## 2540 & 5080 Models

# HD Pro-W



Compact size and footprint

Ideal system for imaging Verico Zahara® waterless plates

Images other 830nm thermal CTP plates

2540dpi and 5080dpi (optional) resolution

Two models imaging plate sizes up to 26.61" x 20.87" and 26.61" x 29.92" (676mm x 530mm and 676mm x 760mm)

Fully automated loading

Dual top loading feature offers automated loading of two sizes of plates

Optional internal punch system

Environmentally-friendly features

## The Right System for Imaging Zahara Plates

The HD Pro-W is an optimal system for imaging Verico's Zahara plates, whether you use Zahara XP on a commercial sheetfed press, Zahara Newz in a web press operation, or Zahara NWL for a narrow-web label printing operation. Its format accommodates small- and medium-size commercial sheetfed presses, newspaper page sizes, and narrow web presses. The 830nm thermal imaging system can interface with both chemistry-free and chemistry-based processing.

## High Performance in a Small Footprint

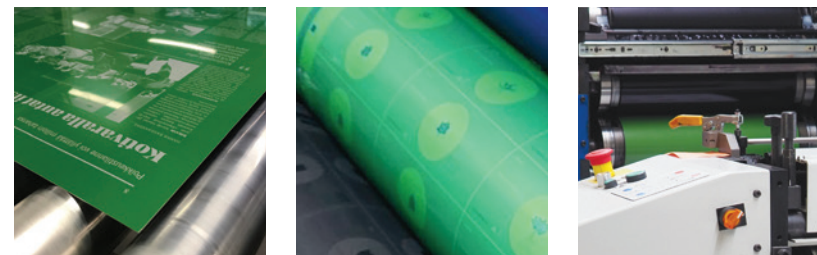
A key feature of the small and medium-format HD Pro-W is how compact it is. The HD Pro-W with auto plate loading system is one of the smallest platesetters in its class, yet the system is loaded with high-end technology for outstanding performance.

## Reliable, High Resolution Laser System

The HD Pro-W's laser system is proven in a large number of systems on the market. Its high resolution and accuracy compliment the imaging quality of Zahara plates. Furthermore, the multiple diode system offers built-in reliability with no reduction in productivity in the event a diode needs replacement. The system automatically compensates for a weak or failed diode. Diodes are easily replaced through the simple drop-in design.

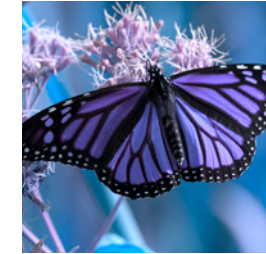
## Enhancing Your Productivity

HD Pro-W provides fully automated plate loading with slip sheet removal. With two integrated trays, the HD Pro-W's dual top loading module accommodates two different plate formats in parallel for completely automatic changing. The investment in an HD Pro-W pays off in no time due to nearly unattended operation. HD Pro-W systems can be optionally equipped with highly accurate internal punching systems. Maximum register accuracy reduces press makeready times, which also minimizes waste.



## Low Energy Consumption, Environmentally Friendly

The HD Pro-W boasts the lowest energy usage in its class and produces the lowest heat output. This has a positive effect on the energy balance. There is no need for additional air conditioning with an operating



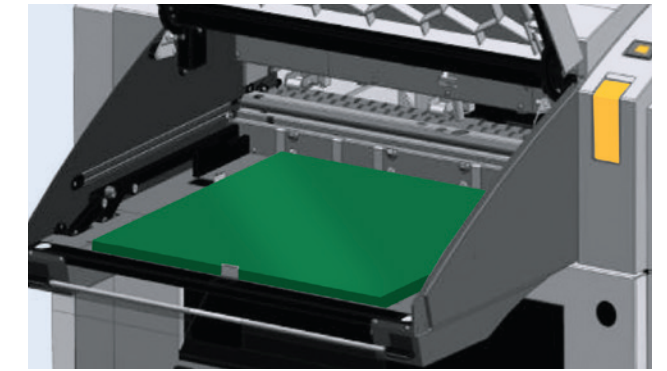
range up to 86°F (30°C) ambient temperature. The minimal electricity requirement provides substantial long-term cost savings along with being more environmentally friendly than competing systems.

## HD Pro-W Specifications

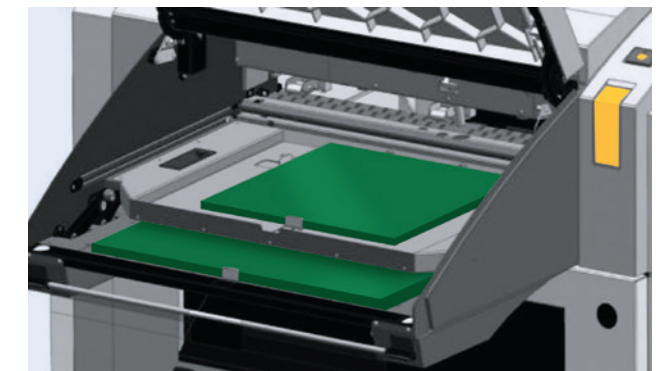
	53cm Model	76cm Model
Automatic plate loading	Dual plate sizes / Top loading	
Plate capacity	Up to 50 plates maximum thickness Up to 100 plates minimum thickness	
Standard throughput (Maximum size plate)	20 plates / hour	17 plates / hour
Optional throughput (Maximum size plate)	27 plates / hour	22 plates / hour
Minimum plate size	9.45" x 9.45" (240mm x 240mm)	9.45" x 9.45" (240mm x 240mm)
Maximum plate size	26.61" x 20.87" (676mm x 530mm)	26.61" x 29.92" (676mm x 760mm)
Maximum image size	25.83" x 20.87" (656mm x 530mm)	25.83" x 29.92" (656mm x 760mm)
Plate thickness	0.0059"–0.014" (0.15mm–0.3mm)	
Resolution	2400 dpi and 2540dpi / 5080dpi optional	
Internal punching	Up to two pairs of punches (optional)	
Register accuracy	±25µm with four consecutive exposures using the internal punch ±5µm with two exposures on the same plate	
Physical dimensions (WxDxH)	61.02" x 67.64" x 53.15" (1550mm x 1718mm x 1350mm)	
Operating environment	62.6–86°F (17–30°C); 30–70% RH	
Voltage	1 phase 200–240 V AC	
Electrical consumption	700 W average, 550 W power consumption during exposure	

Product specifications are subject to change and may vary according to operating environment and other factors.

## Dual-size Plate Loading



Automated dual-size plate loading is facilitated by two integrated trays in the auto load unit. The lower plate shelf accommodates large format plates. The operator places plates directly onto the shelf without a tray.



Smaller plates are stacked on a lightweight, compact tray, which can be done either outside or inside the machine. The tray is easily inserted in the auto loader by the operator.



2540 & 5080 Models

# HD Pro-W

COMPACT CTP SYSTEM OPTIMIZED FOR VERICO ZAHARA® WATERLESS PLATES

## CORPORATE HEADQUARTERS—USA

### Verico Technology LLC

230 Shaker Rd.  
Enfield, CT 06082  
Toll free: 1-800-492-7286  
E-Mail: [info@vericotechnology.com](mailto:info@vericotechnology.com)

## VERICO TECHNOLOGY—EUROPE

Order Management:

### Verico Technology LLC

Kokkolastraße 5  
D-40882 Ratingen  
Germany  
Phone: +49 2102 564 6061  
Fax: +49 2102 564 6001  
E-Mail: [orders@vericotechnology.com](mailto:orders@vericotechnology.com)

Administration:

### Presstek Deutschland GmbH\*

Maurus-Weber-Str. 24  
D-97980 Bad Mergentheim  
Germany  
Phone: +49 7931 483637

\*Currently undergoing name change to Verico Technology



[www.vericotechnology.com](http://www.vericotechnology.com)

Zahara is a trademark of Verico Technology LLC  
Copyright © 2018 Verico Technology LLC

